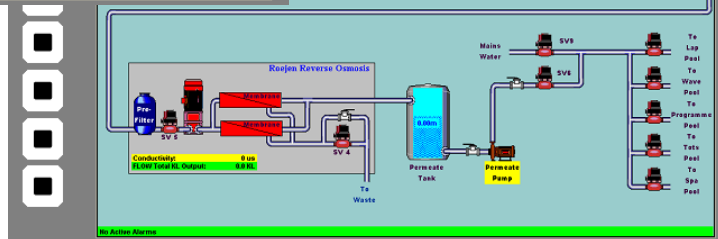
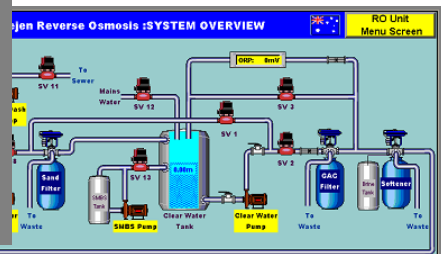
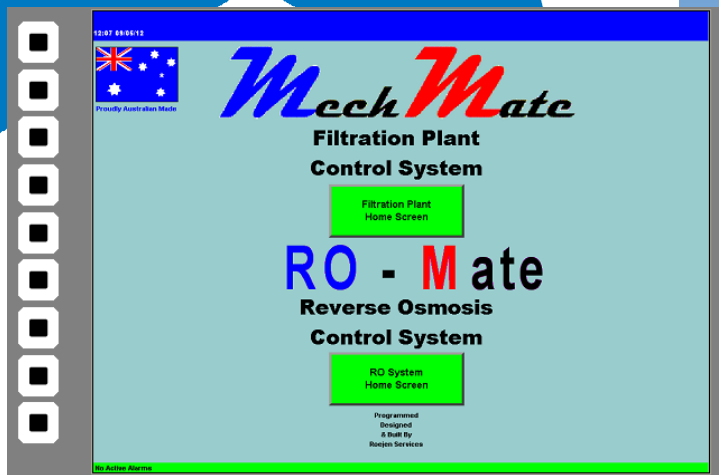


Roejen Services

MECHMATE

Brochure
February 2012



Roejen 
engineering+technical services

www.roejen.com.au

Roejen Services Pty Ltd
As trustee for Roejen Services
Unit Trust ABN 30 273 382 860

Melbourne (Head Office)
Unit 11/993 North Road
Murrumbeena VIC 3163

P (03) 9570 8233
F (03) 9570 8244
E info@roejen.com.au

Sydney
Unit 6/22 Hudson Avenue
Castle Hill NSW 2154

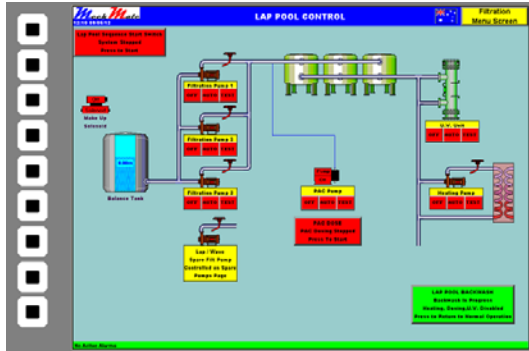
P (02) 9634 8233
F (02) 9634 8211
E roejen@roejen.com.au

Facility Maintenance // Water Treatment // Membrane Systems
Chemical Dosing // Ozone // UV // PLC Automation

The Roejen **MechMate** Plant Automation Platform

Since 1999, **Roejen Services** has successfully supplied, installed and commissioned over 110 **MechMate** control systems in NSW and Victoria.

This PLC based control system has been developed by our company specifically for the Australian aquatics and water treatment industries.



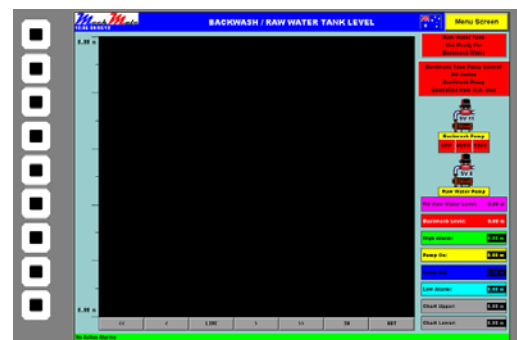
We author our own software and can easily customize or even retro-fit your existing system



The **Roejen MechMate** package will report and log the status and alarms of all equipment as well as required water chemistry levels to a client's PC or local area network.

In addition, it is Internet capable and can provide remote access and transmit alarms via SMS and email to designated personnel.

The system can also act as a protocol converter allowing it to interface with a variety of third party Building Management Systems. This allows data access via an existing automation platform.



MechMate:

Since 1988, **Roejen Services** has been providing engineering and support services to the aquatics and water treatment industries and so understands the needs of asset owners and the water treatment operators.



With such practical experience, and the success of **Roejen MechMate** in the commercial water treatment market, our clients can be assured that **Roejen Mate** is a cost effective and user friendly control system which will assist in the operation and control of their water treatment plant.